

State of Wyoming Corner Record

(In compliance with the *CORNER PERPETUATION AND FILING ACT*, Wyoming Statutes, 1997 Section 33-29-140 et. se., and the Rules and Regulations of the Board of Professional Engineers and Professional Land Surveyors)

Reverse side of this form may be used if more space is needed.

Record of original survey and citation of source of historical information (if corner is lost or obliterated). Description of corner monumentation evidence found and/or monument and accessories established to perpetuate the location of this corner. Sketch of relative location of monument, accessories, and reference points with course and distance to adjacent corner(s) (if determined in this survey). Method and rationale for re-establishment of lost or obliterated corner.

RECORD: G.L.O. survey by J.W. Hammond in 1873; a Limestone 16x10x6, set 11 inches deep, marked 1 notch on west face and 5 notches on east face.

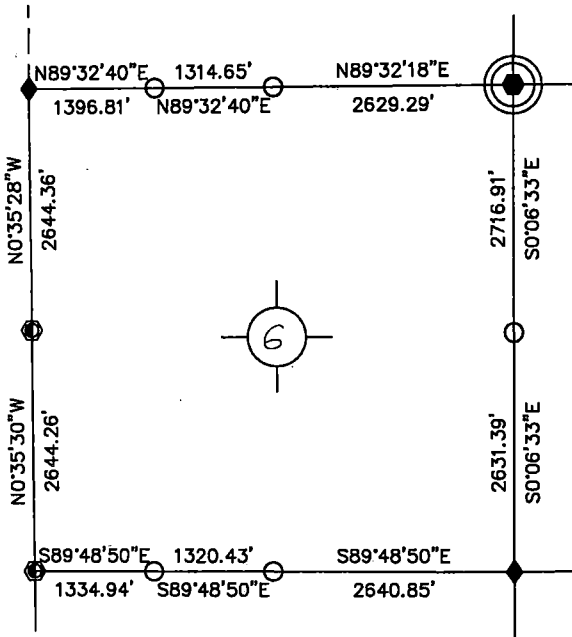
FOUND: Nothing

Re-monumentation: Using BLM manual "Mean Bearing Method" from the N.W. Section 6 to the N.E. Section 3, set 2.5 inch aluminum cap on 3/4x26 inch rebar with cap 0.3 ft above ground and place 3/8" diameter fiberglass marker rod, 48 inch in length alongside corner point as shown in sketch.

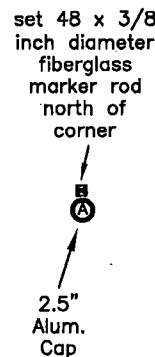
NOTE:
COORDINATES SHOWN ARE BASED UPON
NAD83 WY EAST ZONE AND NAVD 88
VERTICAL DATUM USING GEOID 12B
FROM HARN NGS PID# MN0253 "D50"

Point #	North	East	Elev.
1761062	357267.90	913508.41	5151.40

NOTE:
BEARINGS AND DISTANCES SHOWN HEREON ARE
BASED UPON GRID USING NAD83 WYOMING EAST
ZONE AND TRIMBLE R8 GPS OBSERVATION

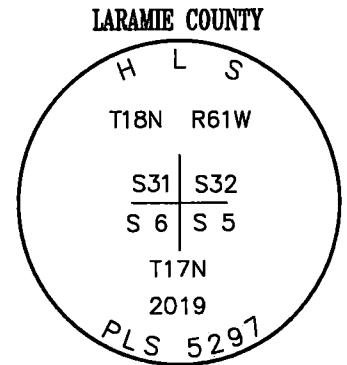


SKETCH



Monument Location

corner referenced this record =



Monument Inscription

Date of Field Work: Oct. 15, 2019

Office Reference: DRG-21971, Pt.1761062

Cross Index Plat

	1	2	3	4	5	6	7	8	9	10	11	12	13	14	15	16	17	18	19	20	21	22	23	24	25
A																									
B																									
C		6		5		4		3		2		1													
D																									
E																									
F																									
G																									
H																									
J																									
K																									
L																									
M																									
N																									
O																									
P																									
Q																									
R																									
S																									
T																									
U																									
V																									
W																									
X																									
Y																									
Z																									

Firm/Agency, Address

this corner record provided by:

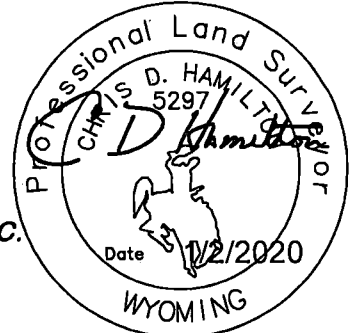
**HAMILTON
LAND
SURVEYING**

UNDER CONTRACT TO:

DRG RIFFIN & ASSOCIATES, INC.
1414 ELK ST., SUITE 202
ROCK SPRINGS, WY 82901
(307) 362-5028

This corner record was prepared by me
or under my direction and supervision.

SEAL & SIGNATURE



RECP #: 769480

RECORDED 1/15/2020 AT 2:04 PM BK# 2655 PG# 1769
Debra K. Lee, CLERK OF LARAMIE COUNTY, WY PAGE 1 OF 1

STATE of WYOMING, Office of Clerk & Recorder, County of Laramie
this block provided for county filing documentation

Corner Name: Northeast, Section: 6, T 17N, R 61W, 6th P.M., Cross-Index No.: A-05